

ISBN : 978-1-5386-0548-6



PROCEEDING

2017 4th International Conference on Electrical, Computer Science and Informatics

September
19-21, 2017

Grand Mercure
Yogyakarta, Indonesia



Organizer :



Sponsored by :



Technical co-Sponsorship by :



co-Organizers :



2017 EECISI Committee

Steering Committee

- Adam Skorek, IEEE MGA Awards and Recognition Chair (R7) Trois-Rivières, QC, Canada
- Satrio Dharmanto, IEEE Indonesia Section (Chair)
- **Pekik Argo Dahono**, IEEE Indonesia Chapters Chair (EdSoc/EDS/PELS/SPS)
- **Mochamad Ashari**, Telkom University, Bandung, Indonesia
- **Tumiran**, Universitas Gadjah Mada, Yogyakarta, Indonesia
- **Hermawan**, Universitas Diponegoro, Semarang, Indonesia
- **Zainudin Nawawi**, Universitas Sriwijaya, Palembang, Indonesia
- **Rahmat Budiarto**, Albaha University, Baha, Saudi Arabia
- Sri Arttini Dwi Prasetyowati, Universitas Islam Sultan Agung, Semarang, Indonesia
- Kartika Firdausy, Universitas Ahmad Dahlan, Yogyakarta, Indonesia
- **Siti Nurmaini**, Universitas Sriwijaya, Palembang, Indonesia

General Chairs

- **Tole Sutikno**, Universitas Ahmad Dahlan, Yogyakarta, Indonesia
- **Suharyanto**, Universitas Gadjah Mada, Yogyakarta, Indonesia
- **Deris Stiawan**, Universitas Sriwijaya, Palembang, Indonesia

General co-Chairs

- **I Wayan Mustika**, IEEE Indonesia Section
- **Imam Much Ibnu Subroto**, Universitas Islam Sultan Agung, Semarang, Indonesia
- **Zulfatman**, Universitas Muhammadiyah Malang, Malang, Indonesia
- Krisna Adiyarta, Universitas Budi Luhur, Jakarta, Indonesia
- Sidiq Syamsul Hidayat, Politeknik Negeri Semarang, Semarang, Indonesia

Publication Chairs

- **Balza Achmad**, Universitas Gadjah Mada, Yogyakarta, Indonesia
- **Mochammad Facta**, Universitas Diponegoro, Semarang, Indonesia

Publicity Chairs

- Son Ali Akbar, Universitas Ahmad Dahlan, Yogyakarta, Indonesia
- Muhammad Qomaruddin, Universitas Islam Sultan Agung, Semarang, Indonesia
- Sam F Chaerul, Universitas Islam Sultan Agung, Semarang, Indonesia

- Ahmad Heryanto, Universitas Sriwijaya, Palembang, Indonesia

Finance Chair and Treasurer

- Wiwiek Fatmawati, Universitas Islam Sultan Agung, Semarang, Indonesia
- Lina Handayani, Universitas Ahmad Dahlan, Yogyakarta, Indonesia

Public Relations Chairs

- Aina Musdholifah, Universitas Gadjah Mada, Yogyakarta, Indonesia
- Arief Marwanto, Universitas Islam Sultan Agung, Semarang, Indonesia
- Reza Firsandaya Malik, Universitas Sriwijaya, Palembang, Indonesia
- Muhammad Syafrullah, Universitas Budi Luhur, Jakarta, Indonesia
- Riky Dwi Puriyanto, Universitas Ahmad Dahlan, Yogyakarta, Indonesia

Technical Program Chairs

- Munawar A. Riyadi, Universitas Diponegoro, Semarang, Indonesia
- Mudrik Alaydrus, Universitas Mercu Buana Jakarta, Indonesia
- Teddy Mantoro, Sampoerna University, Jakarta, Indonesia

Technical Program Members

- Syed Mohsen Naqvi, Newcastle University, UK
- Peter Balazs, Austrian Academy of Sciences, Austria
- Mohammed Alghamdi, Al-Baha University
- Marco Baldi, Università Politecnica delle Marche
- Ihsen Ben Mbarek, National Engineering School of Tunis
- Suryadip Chakraborty, Johnson C. Smith University
- July Díaz, Universidad Distrital Francisco José de Caldas
- Saurabh Dixit, Babu Banarsi Das University, Lucknow
- Wajeb Gharibi, Jazan University, KSA
- Visvasuresh Victor Govindaswamy, Concordia University
- Muhammad Abu Bakar Sidik, Universitas Sriwijaya, Indonesia
- Saied Abd El-atty, Menoufia University-Faculty of Electronic Engineering
- A. K. M. Mahtab Hossain, University of Greenwich
- Ahmed Mobashsher, The University of Queensland
- Ratan Kumar Mondal, Queensland University of Technology
- Rodrigo Montufar-Chaveznavia, Facultad de Ingeniería, Universidad Nacional Autónoma de México
- Michel Owayjan, American University of Science & Technology
- Ljiljana Šeric, University of Split, Croatia
- Hengky Susanto, Hong Kong University of Science and Technology

- **Kun-Da Wu**, HTC Corporation
- **Quanxin Zhao**, University of Electronic Science and Technology of China
- **Tresna Dewi**, Polytechnic of Sriwijaya, Indonesia
- **David Luengo**, Universidad Politécnica de Madrid, Spain
- **Maria Chiara Caschera**, Consiglio Nazionale delle Ricerche, Rome, Italy
- **Amir Nakib**, Université de Paris Est Creteil, Vitry-sur-Seine, France
- Pujianto Yugopuspito, Universitas Pelita Harapan, Indonesia
- **Jens Klare**, Fraunhofer-Gesellschaft, Munich, Germany
- **Ramy Atawia**, Queen's University, Kingston, Kingston, Canada
- **Sanjoy Debbarma**, National Institute of Technology Meghalaya, Shillong, India
- **Bo Kong**, PLA University of Science and Technology, Nanjing, China
- **Noha El-Ganainy**, Arab Academy for Science & Technology and Maritime Transport, Egypt
- **Khoirul Anwar**, Telkom University, Indonesia
- Muhammad Raza, HUST Wuhan, China
- Xiaojun Li, Texas A&M University, United States
- **Indra Riyanto**, Universitas Budi Luhur, Indonesia
-

Organizing Chairs

- **Anton Yudhana**, Universitas Ahmad Dahlan, Yogyakarta, Indonesia
- **Sunardi**, Universitas Ahmad Dahlan, Yogyakarta, Indonesia
- Sri Winiarti, Universitas Ahmad Dahlan, Yogyakarta, Indonesia
- Mursid Wahyu Hananto, Universitas Ahmad Dahlan, Yogyakarta, Indonesia
- Nuryono Satya Widodo, Universitas Ahmad Dahlan, Yogyakarta, Indonesia

International Committee

- **Lech M. Grzesiak**, Warsaw University of Technology, Poland
- **Leo P. Ligthart**, Delft University of Technology, Netherlands
- Malaoui Abdessamad, University of Beni Mellal
- Muhammad Ishtiaq Ahmad, Beijing Institute of Technology
- Diego Arcos-Aviles, Universidad de las Fuerzas Armadas ESPE
- **Eduard Babulak**, Fort Hays State University
- **Alper Bereketli**, ASELSAN Inc.
- **Tugçe Bilen**, Istanbul Technical University
- **Yue Cao**, Northumbria University
- **Arcangelo Castiglione**, University of Salerno, Italy
- **Di Chen**, University of Rostock, Germany
- **Paolo Crippa**, Università Politecnica delle Marche
- **George Dekoulis**, Aerospace Engineering Institut

- Muftah Fraifer, IDC-University of Limerick
- Felix J. Garcia Clemente, University of Murcia, Spain
- Srideep Ghosh, ELTRON Wireless
- Henry Griffith, Michigan State University
- Berkin Güler, Koc University
- Jun He, University of New Brunswick
- Zhaozheng Hu, Georgia Institute of Technology
- Dimitrios Kallergis, University of Piraeus, Greece
- Fukuro Koshiji, Tokyo Polytechnic University
- Sunil Kumar, The LNM Institute of Information Technology, India
- Takashi Kurimoto, National Institute of Informatics, Japan
- Jia-Han Li, National Taiwan University
- Xiangguo Li, Henan University of Technology, China
- Sukadev Meher, National Institute of Technology, India
- Ronald Mulinde, University of South Australia
- Fernando Mussoi, Federal Institute of Santa Catarina, Brazil
- Nagendra Kumar Nainar, CISCO
- Abdellah Najid, Institut National des Postes et Télécommunications
- Gabriele Piantadosi, University of Naples Federico II
- Nadia Qasim, King's College London
- Abdalhossein Rezai, ACECR
- Zulhisyam Salleh, Universiti Teknikal Malaysia Melaka
- Hans Schotten, University of Kaiserslautern
- Min Keng Tan, Universiti Malaysia Sabah
- Revak Tyagi, Cisco Systems
- Marcel Wagner, University of São Paulo
- Hao Wu, ZTE Corporation
- Kishore Yalamanchili, Google
- Mohammed Younis, University of Baghdad
- Jing Zhou, University of Science and Technology of China
- Olympia Roeva, Institute of Biophysics and Biomedical Engineering
- Deepika Koundal, National Institute of Technology, Hamirpur
- Domenico Ciunzo, University of Naples Federico II
- Ravi Subban, Pondicherry University, Pondicherry, India
- Andrea Fiaschetti, Università degli Studi di Roma La Sapienza, Italy
- Murali Krishna Kadiyala, Wichita State University, United States
- Zhe Zhang, Electrical and Computer Engineering Department, George Mason University
- Parag Chatterjee, Universidad Tecnológica Nacional, Buenos Aires, Argentina
- Mohamed Rehan, AvidBeam Technologies, Cairo, Egypt
- Ahmed Helmy, University of Texas at Dallas, Richardson, United States
- Harikumar Rajaguru, Anna University Chennai, India

- Feng Ouyang, Johns Hopkins University, United States
- Xuanxuan Tang, PLA University of Science and Technology, China

[2 A C D E F G H I M N O P R S T U V W](#)

2  [2 A C D E F G H I M N O P R S T U V W](#)

[2D-Sigmoid Enhancement Prior to Segment MRI Glioma Tumour](#)

A  [2 A C D E F G H I M N O P R S T U V W](#)

[A Combination of The Evolutionary Tree Miner and Simulated Annealing](#)

[A Comparison on Cloud Execution Mechanisms: Fog, Edge and Cloud Computing](#)

[A Generic Framework for Information Security Policy Development](#)

[A Hierarchical Description-based Video Monitoring System for Elderly](#)

[A Moving Objects Detection in Underwater Video Using Subtraction of the Background Model](#)

[A Project-Based Approach to FPGA-Aided Teaching of Digital Systems](#)

[A Reactive path planning approach for a Four-Wheel Robot by the Decomposition Coordination Method](#)

[A Reconfigurable MIMO Antenna System for Wireless Communications](#)

[A Study of the Number of Wavelengths Impact in the Optical Burst Switching Core Node](#)

[Adaptive-Fuzzy-PID Controller Based Disturbance Observer for DC Motor Speed Control](#)

[Alerting System for Sport Activity Based on ECG Signals using Proportional Integral Derivative](#)

[An Analysis of Concentration Region on Powerpoint Slides using Eye Tracking](#)

[Analysis of Driving Skills based on Deep Learning using Stacked Autoencoders](#)

Analysis of Electric Circuit Model on Atmospheric Pressure Dielectric Barrier Discharge (DBD) Plasma

Analysis of Holt-Winters Exponential Smoothing and Moving Average Model For Forecasting Ritase

[*Analysis of Statement Branch and Loop Coverage in Software Testing With Genetic Algorithm*](#)

[*Analysis of the Indonesian Vowel /e/ For Lip Synchronization Animation*](#)

[*Anti-Cheating Presence System Based on 3WPCA-Dual Vision Face Recognition*](#)

[*Attack Scenarios and Security Analysis of MQTT Communication Protocol in IoT System*](#)

Attack Scenarios and Security Analysis of MQTT Communication Protocol in IoT System

[*Automated Post-Trabeculectomy Bleb Assesment by Using Image Processing*](#)

[*Autonomous navigation for an Unmanned Aerial Vehicle by the Decomposition Coordination Method*](#)

C  [2](#) [A](#) [C](#) [D](#) [E](#) [F](#) [G](#) [H](#) [I](#) [M](#) [N](#) [O](#) [P](#) [R](#) [S](#) [T](#) [U](#) [V](#) [W](#)

[*Certain Factor Analysis for Extra Pulmonary Tuberculosis Diagnosis*](#)

[*CHMM for Discovering Intentional Process Model From Event Logs By Considering Sequence of Activities*](#)

[*Classifiers Evaluation: Comparison of Performance Classifiers Based on Tuples Amount*](#)

[*Combining Deep Belief Networks and Bidirectional Long Short Term Memory \(Case Study: Sleep Stages Classification\)*](#)

[*Compact Fractal Patch Microstrip Antenna Fed by Coplanar Waveguide for Long Term Evolution Communications*](#)

[*Comparative Study of Web3D Standard Format to Determine the Base Format for A Web3D Framework*](#)

[Compressed Natural Gas \(CNG\) Technology For Fuel Power Plants](#)

[Computer Vision Based Object Tracking as a Teaching Aid for High School Physics Experiments](#)

[Conceptual Framework for Public Policymaking based on System Dynamics and Big Data](#)

D  [2](#) [A](#) [C](#) [D](#) [E](#) [F](#) [G](#) [H](#) [I](#) [M](#) [N](#) [O](#) [P](#) [R](#) [S](#) [T](#) [U](#) [V](#) [W](#)

[Deep learning on curriculum study pattern by selective cross join in advising students' study path](#)

[Design of A Microchip Optical Switching Driven by Low Direct-Current Voltage](#)

[Design of Automatic Switching Bio-Impedance Analysis \(BIA\) for Body Fat Measurement](#)

[Design of PID Disturbance Observer for Temperature Control on Room Heating System](#)

[Design Unmanned Aerial Vehicle Integrated Camera Near Infra-Red to Observe the Plant Health](#)

[Designing Multi-Channel Service Desk Based onITIL Version 3](#)

[Detecting the Early Drop of Attention using EEG Signal](#)

[Determining The Nutrition of Patient Based on Food Packaging Product Using Fuzzy C Means Algorithm](#)

[Developing E-Government Maturity Framework Based On COBIT 5](#)

[Development and Evaluation of Android Based Notification System to Determine Patient's Medicine](#)

[Development of Low Cost Supernumerary Robotic Fingers as an Assistive Device](#)

[Discovering Drugs Combination Pattern Using FP-Growth Algorithm](#)

[Discovering Process Model from Event Logs by Considering Overlapping Rules](#)

E  [2](#) [A](#) [C](#) [D](#) [E](#) [F](#) [G](#) [H](#) [I](#) [M](#) [N](#) [O](#) [P](#) [R](#) [S](#) [T](#) [U](#) [V](#) [W](#)

E-learning Model for Equivalency Education Program in Indonesia

Edge Detection on Objects of Medical Image with Enhancement multiple Morphological Gradient Method

EEG Based Emotion Monitoring Using Wavelet and Learning Vector Quantization

Effect of the Presence of Metal Box on Partial Discharge Detected by Internal Loop Sensor

Empirical Investigation on Factors Related to Individual of Impact Performance Information System

Empirical Investigation on Factors Related to Individual of Impact Performance Information System

Encoding Of Passive Surface Acoustic Wave Based Anti-Collision Radio Frequency Identification Tags

Encryption System based on a Structured Matrix: Vandermonde Matrix

Enhancing Online Business Marketing to Expand Market Shares through IT Governance

Ethnobotany Database: Information Management and Exploration of Medicinal Plants Borneo

Evaluation Of Knowledge Management System Using Technology Acceptance Model

Evaluation Study of Waste Materials for Renewable Energy through 3R Model in Bogor City

Extra Robotic Thumb and Exoskeleton Robotic Fingers for Patient with Hand Function Disability

F  *2 A C D E F G H I M N O P R S T U V W*

Fall Detection Based on Accelerometer and Gyroscope using Back Propagation

Feature Extraction and Classification of Thorax X-Ray Image in The Assessment of Osteoporosis

FEM Modeling of Squeeze Film Damping Effect in RF-MEMS Switches

[Forecasts Marine Weather On Java Sea Using Hybrid Methods: TS-ANFIS](#)

[Forming Heterogeneous Group in Cooperative Learning Process using PAM and Equitable Distribution](#)

G  [2 A C D E F G H I M N O P R S T U V W](#)

[Graphical Approach for RF Amplifier Specification in Radio over Fiber System: Maximum Power Issues](#)

Graphical Approach for RF Amplifier Specification in Radio over Fiber System: Maximum Power Issues

H  [2 A C D E F G H I M N O P R S T U V W](#)

[High Efficiency Single Phase Inverter Design](#)

[High Performance Direct Torque Control of Induction Motor Drives: Problems and Improvements](#)

[Honey Yield Prediction Using Tsukamoto Fuzzy Inference System](#)

I  [2 A C D E F G H I M N O P R S T U V W](#)

[Imperceptible Image Watermarking based on Chinese Remainder Theorem over the Edges](#)

[Implementation of Decision Expert \(DEX\) in The "SALADGARDEN" Application](#)

[Implementation of K-Means Clustering Method to Distribution of High School Teachers](#)

[Implementation of Unbiased Stereology Method for Organ Volume Estimation using Image Processing](#)

[Improvement of eGov & mGov in Multilingual Countries with Digital Etymology using Sanskrit Grammar](#)

[Improving E-Book Learning Experience by Learning Recommendation](#)

[Incremental High Throughput Network Traffic Classifier](#)

[Integration Protocol Student Academic Information to Campus RFID Gate Pass System](#)

[IoT Smart Device for e-Learning Content Sharing on Hybrid Cloud Environment](#)

M  [2 A C D E F G H I M N O P R S T U V W](#)

[Makassar Smart City Operation Centre Priority Optimization Using Fuzzy MCDM](#)

[Measurement Of Maximum Value Of Dental Radiograph To Predict The Bone Mineral Density](#)

[Measurement of Partial Discharge Induced Electromagnetic Wave using Loop Antenna](#)

[Measurement of Partial Discharge inside Metal Enclosed Power Apparatus using Internal Sensor](#)

[Methodology for Constructing Form Ontology](#)

[Minimizing the Estimated Solution Cost with A* Search to Support Minimal Mapping Repair](#)

[Mobile Application Design For Recommendation System On Disease Pattern Counseling](#)

[Mobile Content Based Image Retrieval Architectures](#)

[Modeling IT Value based on Meta-Analysis](#)

[Myoelectric control systems for hand rehabilitation device: a review](#)

N  [2 A C D E F G H I M N O P R S T U V W](#)

[Neural Network Controller Design for a Mobile Robot Navigation; a Case Study](#)

[Neural Network on Mortality Prediction for the Patient Admitted with ADHD](#)

[Nitrogen \(N\) Fertilizer Measuring Instrument On Maize-Based Plant Microcontroller](#)

[Non-invasive Hemoglobin Measurement for Anemia Diagnosis](#)

O  [2 A C D E F G H I M N O P R S T U V W](#)

[*Odor Localization using Gas Sensor for Mobile Robot*](#)

[*Ontology-Based Sentence Extraction for Answering Why-Question*](#)

[*Opinion Detection of Public Sector Financial Statements Using K-Nearest Neighbors*](#)

*Optimization Syntax Query of Search Algorithm on Employee Pages Module
Knowledge Management System*

[*Optimizing Effort and Time Parameters of COCOMO II Estimation using Fuzzy
Multi-Objective PSO*](#)

[*Optimum Phase Number for Multiphase PWM Inverters*](#)

P  [2 A C D E F G H I M N O P R S T U V W](#)

[*Parameterized Kick Engine For R-SCUAD Robot*](#)

[*Performance Analysis for MIMO LTE on the High Altitude Platform Station*](#)

[*Performance Analysis of CSI:T Routing in a Delay Tolerant Networks*](#)

[*Performance Analysis of Network Emulator Based On The Use of Resources In
Virtual Laboratory*](#)

[*Performance Evaluation of IPv6 Jumbogram Packets Transmission using Jumbo
Frames*](#)

*Performance Measurement Based on Coloured Petri Net Simulation of Scalable
Business Processes*

[*Performance Measurement Based on Coloured Petri Net Simulation of Scalable
Business Processes*](#)

[*Performance of Routing Protocol in MANET with Combined Scalable Video Coding*](#)

Performance of Routing Protocol in MANET with Combined Scalable Video Coding

[*Performance Rate for Implementation of Mobile Learning in Network*](#)

[*PID Designs Using DE and PSO Algorithms for Damping Oscillations in A DC Motor
Speed*](#)

[Poincaré plot of fingertip photoplethysmogram pulse amplitude suitable to assess diabetes status](#)

[Position Tracking for Static Target using Burst Signals with Time Difference of Arrival Method](#)

[Precise Wide Baseline Stereo Image Matching for Compact Digital Cameras](#)

[Prediction of Rupiah Against US Dollar by Using ARIMA](#)

[Problem Identification Of IT Governance Using COBIT 5 Framework For Education Information System](#)

R  [2 A C D E F G H I M N O P R S T U V W](#)

[Recommendation System on Knowledge Management System via OAI-PMH](#)

[Reconfigurable Logic Embedded Architecture of Support Vector Machine Linear Kernel](#)

[Redirection Concept of Autonomous Mobile Robot HY-SRF05 Sensor to Reduce The Number of Sensors](#)

[Region of Interest Detection for Pregnancy Image Processing](#)

[Renewable Energy Inclusion on Economic Power Optimization using Thunderstorm Algorithm](#)

Research of Maneuver Target Tracking Filtering Algorithm

Research of Simple Multi-Attribute Rating Technique for Decision Support

[Revealing Daily Human Activity Pattern using Process Mining Approach](#)

[Robust and Imperceptible Image Watermarking by DC Coefficients Using Singular Value Decomposition](#)

Robust and Imperceptible Image Watermarking by DC Coefficients Using Singular Value Decomposition

S  [2 A C D E F G H I M N O P R S T U V W](#)

Scalability Measurement of Business Process Model Using Business Processes Similarity and Complexity

Scalable Attack Analysis of Business Process based on Decision Mining Classification

SDR Design for OFDM Based Spectrum Exchange Information Using Arduino UNO and X-Bee

Service Computing System Engineering Life Cycle

Shape Defect Detection for Product Quality Inspection and Monitoring System

Single Frame Resection of Compact Digital Cameras for UAV Imagery

Single Phase Inverter for Photovoltaic Source With Totem Pole Circuit

Sketch Plus Colorization Deep Convolutional Neural Networks for Photos Generation from Sketches

Small-Disturbance Angle Stability Enhancement using Intelligent Redox Flow Batteries

Smartphone for Next Generation Attendance System and Human Resources Payroll System

Socio-Technical Factors of E-Government Implementation

Spoken Word Recognition Using Mel-Frequency Cepstrum Coefficients and Learning Vector Quantization

T  *2 A C D E F G H I M N O P R S T U V W*

Target Tracking in Mobile Robot under Uncertain Environment using Fuzzy Logic Controller

Task-Technology Fit for Textile Cyberpreneur's Intention to Adopt Cloud-Based M-Retail Application

Teaching & Learning Support For COA Courses Design On CE & CS For Undergraduate

Teaching & Learning Support For COA Courses Design On CE & CS For Undergraduate

[Text Modeling In Adaptive Educational Chat Room Based On Madamira Tool](#)

[Texture Analysis and Fracture Identification of Lower Extremities Bones X-Ray Images](#)

The design a system of retention and control on broiler farms based on the flow of data

[The design a system of retention and control on broiler farms based on the flow of data](#)

[The Design of A Smart Refrigerator Prototype](#)

[The Effect of Coating on Leakage Current Characteristic of Coast Field Aged Ceramic Insulator](#)

[The Improvement of Phonocardiograph Signal \(PCG\) Representation Through the Electronic Stethoscope](#)

The Improvement of The Triple Play Services Function by The Gigabit-capable Passive Optical Networks

[The Onion Routing Performance using Shadow-plugin-TOR](#)

[The Ontology-Based Methodology Phases To Develop Multi-Agent System \(OmMAS\)](#)

[The rule Extraction of Numerical Association Rule Mining Using Hybrid Evolutionary Algorithm](#)

[The successful elements implementing the eLearning using Cloud Services Data Centre](#)

[Toward a New Approach in Fruit Recognition using Hybrid RGBD Features and Fruit Hierarchy Property](#)

[Towards Development of A Computerised System for Screening and Monitoring of Diabetic Retinopathy](#)

U  [2](#) [A](#) [C](#) [D](#) [E](#) [F](#) [G](#) [H](#) [I](#) [M](#) [N](#) [O](#) [P](#) [R](#) [S](#) [T](#) [U](#) [V](#) [W](#)

[Unified Concept-based Multimedia Information Retrieval Technique](#)

V  [2](#) [A](#) [C](#) [D](#) [E](#) [F](#) [G](#) [H](#) [I](#) [M](#) [N](#) [O](#) [P](#) [R](#) [S](#) [T](#) [U](#) [V](#) [W](#)

[Variance Analysis of Photoplethysmography for Blood Pressure Measurement](#)

W  [2 A C D E F G H I M N O P R S T U V W](#)

[WatsaQ: Repository of Al Hadith in Bahasa \(Case Study: Hadith Bukhari\)](#)

[Wireless Sensor System for Prediction of Carbon Monoxide Concentration using Fuzzy Time Series](#)

[Wood Texture Detection with Conjugate Gradient Neural Network Algorithm](#)

Additional Reviewers

Hany Ali Abd El-Aal	Cairo University	Egypt
Malaoui Abdessamad	Sultan Moulay Slimane University of Beni Mellal	Morocco
Fairul Azhar Abdul Shukor	Universiti Teknikal Malaysia Melaka	Malaysia
Trio Adiono	STEI ITB	Indonesia
Andi Adriansyah	Universitas Mercu Buana	Indonesia
Muhammad Ishtiaq Ahmad	Beijing Institute of Technology	P.R. China
Son Akbar	Universitas Ahmad Dahlan	Indonesia
Hamid Alasadi	IRAQ- BASRA	Iraq
Mudrik Alaydrus	Universitas Mercu Buana, Jakarta	Indonesia
Mehran Alidoost Nia	University of Tehran	Iran
Fahad Alswaina	University of Bridgeport	USA
Sahil Anchal	Indian Institute of Technology Delhi	India
Trias Andromeda	Universiti Teknologi Malaysia	Malaysia
Nor Badrul Anuar	University of Malaya	Malaysia
Khoirul Anwar	Telkom University	Indonesia
Diego Arcos-Aviles	Universidad de las Fuerzas Armadas ESPE	Ecuador
Anu Shaju Areeckal	National Institute of Technology Karnataka, Surathkal	India
Yanuar Arief	UNIMAS	Malaysia

Mochammad Ariyanto	Diponegoro University	Indonesia
Eduard Babulak Basari Basari	Fort Hays State University	USA
Alper Bereketli	Universitas Indonesia	Indonesia
Tuğçe Bilen	ASELSAN Inc.	Turkey
Rodrigo Campos Bortoletto	Istanbul Technical University	Turkey
Christos-Savvas Bouganis	São Paulo Federal Institute of Education, Science and Technology	Brazil
Arif Bramantoro	Imperial College London	United Kingdom (Great Britain)
Rahmat Budiarto	Al Imam Mohammad Ibn Saud Islamic University	Saudi Arabia
Feri Candra	Al Baha University	Saudi Arabia
Yue Cao	Universiti Teknologi Malaysia	Malaysia
Alberto Carboni	Northumbria University	United Kingdom (Great Britain)
Maria Chiara Caschera	Politecnico di Milano	Italy
Arcangelo Castiglione	CNR	Italy
Sam F Chaerul Haviana	University of Salerno	Italy
Che Haziqah Che Hussin	Universitas Islam Sultan Agung	Indonesia
Di Chen	University Malaysia Sabah	Malaysia
Adilson W Chinatto, Jr.	University of Rostock	Germany
Paolo Crippa	Espectro Ltd.	Brazil
Esmeralda Contessa Djamal	Università Politecnica delle Marche	Italy
Drazen Dujic	Universitas Jenderal Achmad Yani	Indonesia
Mohammed El Hassouni	EPFL	Swaziland
Hala El Ouarrak	University of Mohammed V -Agdal-	Morocco
Noha Ossama El-Ganainy	University Hassan II Mohammedia	Morocco
	Arab Academy of Science and Technology AAST	Egypt

Wei Feng	Tsinghua University	P.R. China
Muftah Fraifer	IDC-CSIS-UL	Ireland
Sibaji Gaj	IIT Guwahati	India
Felix J. Garcia Clemente	University of Murcia	Spain
Hamza Ghandorh	University of Western Ontario	Canada
Srideep Ghosh	ELTRON Wireless	India
Syed Ameer Ahmed Gillani	Zhejiang University	P.R. China
Lacrimioara Grama	Technical University of Cluj-Napoca	Romania
Henry Griffith	Michigan State University	USA
Berkin Güler	Koc University	Turkey
Teddy Surya Gunawan	International Islamic University Malaysia	Malaysia
Rohit Gupta	Thapar University	India
Prasetiyono Hari Mukti	Institut Teknologi Sepuluh Nopember	Indonesia
Bagus Haryadi	Universitas Ahmad Dahlan	Indonesia
Zainal Hasibuan	University of Indonesia	Indonesia
Abdolreza Hatamlou	Islamic Azad University, Khoy Branch	Iran
Jun He	University of New Brunswick	Canada
Ahmad Heryanto	Sriwijaya University	Indonesia
Tris Dewi Indraswati	Institut Teknologi Indonesia	Indonesia
Tilokchan Irengbam	Manipur University	India
Nanang Ismail	UIN Bandung	Indonesia
Rifky Ismail	Diponegoro University	Indonesia
R Rizal Isnanto	Diponegoro University	Indonesia
Anish Jindal	Thapar University, Patiala (India)	India
Murali Krishna Kadiyala	Cisco Systems. Inc	USA
Dimitrios Kallergis	University of Piraeus	Greece
Moh Khairudin Khairudin, Mr	Universitas Negeri Yogyakarta	Indonesia
Umar Khayam	Institut Teknologi Bandung	Indonesia
Yassine Khlifi	Umm Al-Qura University, KSA	Saudi Arabia

Jens Klare	Fraunhofer FHR	Germany
Bo Kong	PLA University of Science and Technology	P.R. China
Deepika Koundal	Chitkara University	India
Takashi Kurimoto	NII	Japan
Fajri Kurniawan	Universiti Teknologi Malaysia	Malaysia
Xiangguo Li	Henan University of Technology	P.R. China
Xiaojun Li	Texas A&M University	USA
David Luengo	Universidad Politecnica de Madrid (UPM)	Spain
Satria Mandala	Universitas Telkom	Indonesia
Muhammad Nadzir Marsono	Universiti Teknologi Malaysia	Malaysia
Arief Marwanto	Universiti Islam Sultan Agung (UNISSULA) Semarang	Indonesia
Rajeev Mathur	Geetanjali Instt of Tech Studies, Udaipur	India
Amir Hooshang Mazinan	Islamic Azad University, South Tehran Branch	Iran
Siti Armiza Mohd Aris	Universiti Teknologi Malaysia	Malaysia
Martin Mudroch	Czech Technical University in Prague	Czech Republic
Bodhibrata Mukhopadhyay	Indian Institute of Technology Delhi	India
Ronald Mulinde	University of South Australia	Australia
Indra H Mulyadi	Technische Universität Ilmenau	Germany
Achmad Munir	Institut Teknologi Bandung	Indonesia
Aina Musdholifah	Gadjah Mada University	Indonesia
Fernando L. R. Mussoi	Federal Institute of Santa Catarina	Brazil
Imamul Muttakin	CTECH Labs Edwar Technology Co.	Indonesia
Imamul Muttakin	Universitas Sultan Ageng Tirtayasa	Indonesia
Adharul Muttaqin	Universitas Brawijaya	Indonesia
Abdellah Najid	Institut National des Postes et Télécommunications	Morocco
Syed Mohsen Naqvi	Newcastle University	United Kingdom (Great Britain)

Okky Nurhayati	Diponegoro University	Indonesia
Joanna Isabelle Olszewska	University of Gloucestershire	United Kingdom (Great Britain)
Oskars Ozolins	RISE Acreo	Sweden
Shashikant Shantilal Patil	SVKM NMIMS Mumbai India	India
Gabriele Piantadosi	University of Naples Federico II	Italy
Rajesh M Pindoriya	Indian Institute of Technology Mandi	India
Octavian Adrian Postolache	Instituto de Telecomunicações, Lisboa/IT	Portugal
Teguh Prakoso	Diponegoro University	Indonesia
Agus Pratondo	NUS	Singapore
Gigih Priyandoko	UMP	Malaysia
Nadia Qasim	King's College London	United Kingdom (Great Britain)
Muhammad Qomaruddin	Universitas Islam Sultan Agung (UNISSULA)	Indonesia
Tri Desmana Rachmilda	Institut Teknologi Bandung	Indonesia
Wenny Rahayu	La Trobe University	Australia
Basuki Rahmat	Telkom University	Indonesia
Harikumar Rajaguru	anna University Chennai	India
Kalamullah Ramli	Universitas Indonesia	Indonesia
Shuvendu Rana	University of Strathclyde	United Kingdom (Great Britain)
Muhammad Raza	HUST Wuhan China	P.R. China
Indra Riyanto	Universitas Budi Luhur	Indonesia
Olympia Roeva	Institute of Biophysics and Biomedical Engineering	Bulgaria
Zulhisyam Salleh	Politeknik Melaka	Malaysia
Gnane Swarnadh Satapathi, Er	National Institute of Technology, Karnataka	India
Haikal Satria	Universiti Teknologi Malaysia	Malaysia
Dian Sawitri	UDINUS	Indonesia
Hans D. Schotten	University of Kaiserslautern	Germany
Stefan Schuster	Voestalpine Stahl Gmbh	Austria

Ali Selamat	Universiti Teknologi Malaysia	Malaysia
Norhalina Senan	UTHM	Malaysia
Noor Akhmad Setiawan	Universitas Gadjah Mada	Indonesia
Aditi Sharma	MBM Engineering College Jodhpur	India
Edelberto Franco Silva	Universidade Federal de Juiz de Fora	Brazil
Aghus Sofwan	Diponegoro University	Indonesia
Maman Somantri	Gadjah Mada University	Indonesia
Saurabh Srivastava	NIt K	India
Ravi Subban	Pondicherry University, Pondicherry	India
Rubita Sudirman	Universiti Teknologi Malaysia	Malaysia
Sunardi Sunardi	Universitas Ahmad Dahlan	Indonesia
Iping Supriana	Bandung Institute of Technology	Indonesia
Fajar Suryawan	Universitas Muhammadiyah Surakarta	Indonesia
Muhammad Syafrullah	Universitas Budi Luhur	Indonesia
Abdul Syakur	Diponegoro University	Indonesia
Srinivasulu Tadisetty	Kakatiya University College of Engineering and Technology	India
Xuanxuan Tang	College of Communications Engineering, PLAUST	P.R. China
Fritzi Töpfer	KTH Royal Institute of Technology	Sweden
Revak R Tyagi	Cisco Systems	USA
Sudhanshu Tyagi	Thapar University, Patiala	India
Marcel Stefan Wagner	University of São Paulo	Brazil
Jing Wang	Georgia Institute of Technology	USA
Setyawan Widyarto	Universiti Selangor	Malaysia
Augie Widyotriatmo	Institut Teknologi Bandung	Indonesia
Hao Wu	ZTE Corporation	P.R. China
Mohammed I. Younis	University of Baghdad	Iraq
Pujianto Yugopuspito	Universitas Pelita Harapan	Indonesia
Arda Yuniarta	King Abdulaziz University	Saudi Arabia
Eniman Yunus	Institut Teknologi Bandung	Indonesia

Chi Zhang	Midea America Corporation	USA
Zhe Zhang	George Mason University	USA
Jing Zhou	University of Science and Technology of China	P.R. China
Tudor Cătălin Zorilă	Toshiba Cambridge Research Laboratory	United Kingdom (Great Britain)
Sonny Zuhuda	International Islamic University Malaysia	Malaysia

Design of PID Disturbance Observer for Temperature Control on Room Heating System

Yoga Alif Kurnia Utama
Electronic Engineering Department
University of Widya Kartika
Surabaya, Indonesia
yoga.alif@widyakartika.ac.id

Yulius Hari
Informatic Engineering Department
University of Widya Kartika
Surabaya, Indonesia
yulius.hari.s@widyakartika.ac.id

Abstract— Heat is one of an energy form that can move from a high temperature to a low temperature. This will strongly make the temperature outside of the room affect the temperature in the room. Therefore, the temperature in the room becomes unstable. That is a problem for room heating system which requires a stable indoor temperature output. Because of that reason, so the system needs temperature control method that can reject disturbance that derived from the outdoor temperature. This research will propose a solution that is the use of PID Disturbance Observer (PID-DOB) method for resolving that problem. The tests that we carried out is comparing the PID controller and PID-DOB by simulation with four variation temperature and calculating the performance index by using integral time absolute error (ITAE) criteria. The result showed that the ITAE average for PID is 10.51 and PID-DOB are 1.78. This result showed that PID-DOB controller can be used as temperature control which resists to the varied temperature outside the room.

Keywords— PID, PID Disturbance Observer, Room Heating System, Temperature Control

I. INTRODUCTION

The temperature in the room will tend to be affected by outside temperature. If the temperature outside is colder than inside temperature, then temperature inside the room will tend to be colder, likewise contrarily. This is caused by heat characteristic, that is heat always move from high-temperature object to lower temperature object. When the temperature on outside colder than inside the room, then the heat which inside the room will move to outside. This kind moving heat are known as convection and conduction [1]. Therefore, if the temperature outside the room is unstable, then this will make the temperature inside the room become unstable too. That is make the temperature from the outside will become a disturbance towards a heating system.

This problem often occurs in the breeding of plants in the green house [2]. In green house, plants are conditioned at a certain temperature. One of the case is the temperature problem of mushroom nursery [3]. There are some mushrooms that have a specific room temperature in its growth. This temperature must be stable at a certain value. Researchers have tried to create a fuzzy control to maintain the temperature [4]. But the results indicate that the controller that has been created, has not be able

to reject the outside air temperature interference. Another example is the temperature problem in the water bath system. This system is usually used in industry or laboratory. In a study [5], researcher also used fuzzy to regulate the temperature of the system. The absolute error that generated by this controller is still very large.

On the other research [6], researcher tried to use simple method, which is PID method to maintain temperature inside a CPU. PID method has been used to reduce CPU temperature in order to match it with the temperature setting which desired. The result showed that CPU temperature can drop close to the temperature setting that researcher's desire, but this temperature still can't stable. The problem of instability because external disturbance has been investigated in research on DC Motor [7]. The plant is given an external disturbance which is increased load on motor axis. Researcher used the disturbance observer method to reject the external disturbance that occurred at DC Motor. The result showed that disturbance observer method can compensate the disturbance that coming from outside of plant – in this case, come from load changes on motor axis.

In this research, the researcher has an idea by using this PID-DOB method, to solving external disturbance on room heating system. This PID-DOB method is tested on a room heating system using Simulink MATLAB R2014a. There are several steps that must be passed on this research. They are room heating system modeling, disturbance design, PID-DOB design, and PID-DOB testing.

II. METHOD

A. Room Heating System Modelling

In the simulation testing of a controller using Simulink MATLAB R2014a, the first thing to make is a mathematic model of the plant. Therefore, in this research, we will first make a mathematical model of room heating system. In a room heating system, there is three main components, specifically are a heater, temperature sensor and room [8]. The relation between all three of them can be seen in Figure 1

Figure 1 shown workflow of the heater when heat up the room temperature. Air from the inside of room being absorbed into a pipeline. After that, the air will flow through the heater. The air that has been heated, will flow back to the room.

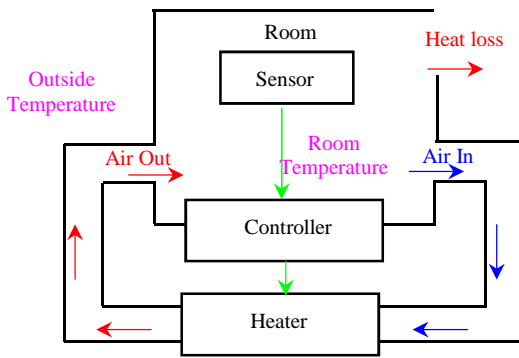


Fig. 1. Room Heating System

There are several things that important to know in create mathematic model for room heating system. They are a room thermal characteristic, a heater thermal characteristic, temperature control, temperature outside the room, and temperature inside the room. From five-point that affects a room heating system, we can conclude that there are four variables which corresponds. They are thermal energy which comes from heater to the room (Q_{gain}), thermal energy which comes from room to the surroundings (Q_{loss}), room temperature (T_{room}), and temperature outside of the room (T_{out}). If the heater is turned on until reaching the certain temperature i.e T_{heater} , and initial room temperature i.e T_{room} , then the increase of thermal energy that flow by convection from the heater to the room (Q_{gain}) can we calculated by using (1).

$$Q_{gain} = m_{heater\ air} c_{air} (T_h - T_r) \quad (1)$$

Where:

- Q_{gain} = Thermal energy from heater to the room (J)
- $m_{heater\ air}$ = Total air mass (Kg)
- c_{air} = Heat capacity (J/kg °C) = 1005.4 J/kg °C
- T_h = Heater temperature (°C)
- T_r = Room temperature (°C)

From Figure 1, air that inside the room will absorb by a fan. Then that air flows through the heater and flows back to the room. The rapidity of thermal energy which comes from heater can we formulated in accordance to (2)

$$\frac{Q_{gain}}{dt} = \frac{m_{heater\ air}}{dt} c_{air} (T_h - T_r) \quad (2)$$

Because air mass per time that coming from heater always constant then (2) can we change into (3).

$$\frac{Q_{gain}}{dt} = \dot{M}_{heater} c_{air} (T_h - T_r) \quad (3)$$

Where:

- \dot{M}_{heater} = Constant rate of air mass passing through heater (kg/hour) = 3600 kg/hour

Room thermal energy which has obtained from the heater will reduce as big as Q_{loss} . This because heat transfer is by conduction through the room wall or window. The rate of thermal energy loss can formulate into (4).

$$\frac{Q_{loss}}{dt} = \frac{kA(T_r - T_{out})}{D} \quad (4)$$

Where:

- Q_{loss} = Thermal energy loss (Q_{loss}).
- k = Thermal conductivity coefficient (W/m °C) =
- A = Cross section area (m²)
- D = Wall thickness (m)
- T_r = Room temperature (°C)
- T_{out} = Temperature outside of the room (°C)

If seen in the (4), k , A , and D variable are constants. To simplify (4) then kA/D has to replaced with $1/R$ where R is heat resistant coefficient, so that (5) become simpler.

$$\frac{Q_{loss}}{dt} = \frac{(T_r - T_{out})}{R} \quad (5)$$

Where:

- R = heat resistant coefficient (hour °C/J) = 4.27×10^{-7} hour °C/J

To measure the rapidity of room temperature change, a heater to room thermal energy subtracted to thermal energy that loss from inside the room to surroundings. The rapidity of room temperature change value is formulated as in (6).

$$\frac{dT_r}{dt} = \frac{1}{m_{room\ air} c_{air}} \left(\frac{dQ_{gain}}{dt} - \frac{dQ_{loss}}{dt} \right) \quad (6)$$

Where:

- $m_{room\ air}$ = mass of air in the room or heater (kg) = 1470 kg

B. Disturbance Design

To examine how effective this PID-DOB control will resistant to disturbance, so we need giving some disturbance to the room heating system. This research will use four model variation of outside temperature air. The model variation of outside temperature air is shown in Figure 2 up to Figure 5.

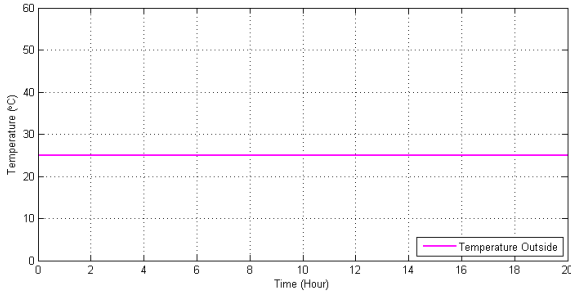


Fig. 2. Outside Temperature Air Model I

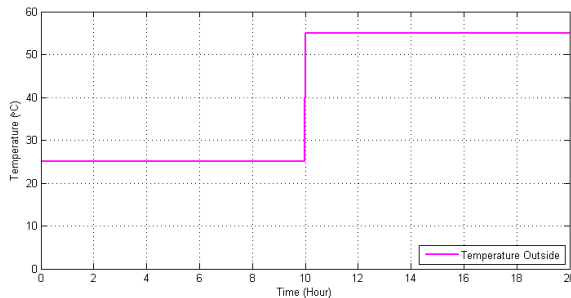


Fig. 3. Outside Temperature Air Model II

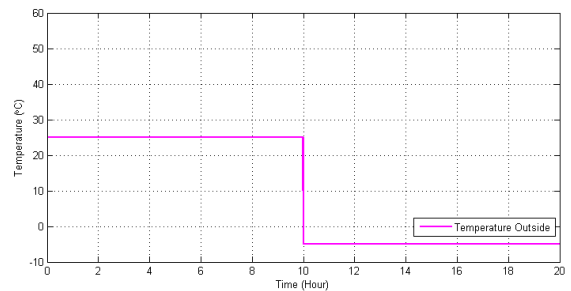


Fig. 4. Outside Temperature Air Model II

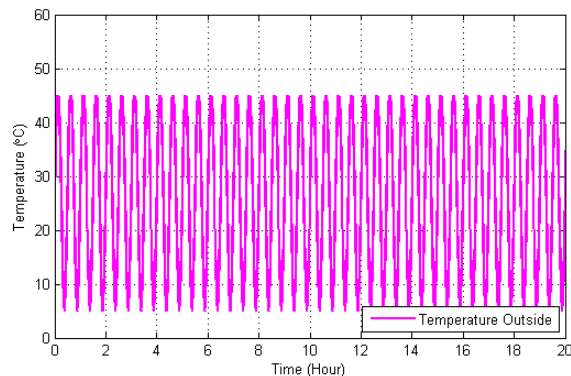


Fig. 5. Outside Temperature Air Model IV

Equation (4) shows that thermal energy will loss depend on the difference between room temperature and air temperature outside the room. The bigger the difference between this two variable, then the loss of thermal energy from that room will be bigger too. Because of that, by varying the temperature from the outside will give disturbance to room heating control system. On Figure 2, outside temperature air we made fixed on 25°C for 20 hours. While in Figure 3, on first 10 hours, the outside temperature air we made fixed on 25°C and after that the temperature will rise to 55°C for second 10 hours. On Figure 4, the outside temperature air we set on 25°C on first 10 hours, then we lowered the temperature to -5°C on second 10 hours. While on Figure 5, we raised the temperature to 45°C then lowered it to 5°C. This outside temperature changes will form a sine with the period value of temperature changes is 0.5 s or frequency value is 2 Hz. In this research, the four model variation of outside temperature air will be applied to PID controller and PID-DOB to observe the effectiveness of the two controllers to endure the disturbance in which because of outside temperature air. To understand the work index of two controllers, then we use ITAE criterion [9]. On ITAE criterion, timing element are into integration factor. So ITAE value will increases as time goes by. The value of ITAE is formulated to (7).

$$ITAE = \int_0^{\infty} t|e(t)|dt \tag{7}$$

where:

ITAE = integral time absolute error.

t = time (s)

e(t) = error time

C. PID-DOB Design

There are 3 steps that must be done to design PID-DOB. **First it starts with PID Design.** The utility of PID is to control temperature room to match with the reference temperature that we provided. In this research, reference temperature will be set to 40°C. Reference temperature will not be changing. Outside temperature air is same as the air temperature mode I where temperature air we made fixed on 25°C like shown in Figure 2. It is considered that the average of outside air is 25°C. Process of PID constants selection is done by choosing constants that makes room temperature equal to the reference temperature. From this step, the value of the constants is proportional constant is 10, the integral constant is 15, and the derivative constant is 1. **The second is inverse model of room heating system modelling.** According to (6), the rate of air room temperature is equivalent with difference between thermal energy that coming from the heater and thermal energy loss. If we defined (8) and (9),

$$N = \frac{1}{m_{room\ air}c_{air}} \tag{8}$$

$$W = \dot{M}_{heater}c_{air} \tag{9}$$

then (6) will become to (10).

$$\frac{dT_r}{dt} = N \left(\frac{dQ_{gain}}{dt} - \frac{dQ_{loss}}{dt} \right) \quad (10)$$

If (3) and (4) inserted into (10) then it will make a new equation. That is (12).

$$\begin{aligned} \frac{dT_r}{dt} &= N \left(W(T_h - T_r) - \frac{(T_r - T_{out})}{R} \right) \\ T_h &= \frac{1}{NW} \left(\frac{dT_r}{dt} + N \left(W + \frac{1}{R} \right) T_r - \frac{N}{R} T_{out} \right) \end{aligned} \quad (11)$$

This (11) are the inverse model of room heating system equation. **The third is filter design.** This filter must be low pass filter. This low pass filter use for reject the external disturbance that come to the system [10]. The low pass filter is made by referring to (12).

$$Q(s) = \frac{1 + \sum_{k=1}^{N-r} a_k (\tau s)^k}{1 + \sum_{k=1}^N a_k (\tau s)^k} \quad (12)$$

Where:

- N = order of Q(s)
- R = relative degree of Q(s)
- τ = cutoff frequency parameter
- a_k = coefficient Q(s)

The higher the order of filter, the bigger filter bandwidth to reject the disturbance. However, with higher filter order, the phase will fall behind. It must be considered that the filter must have order as small as possible, thus the phase will not fall behind. Equation (3), (5), and (6), show that room heating system plant is a first-order system. So the LPF which will this research use is the first-order filter. The disturbance frequency that occurs assumed are not more than 100 Hz so the created filter has 100 Hz cut-off frequency.

Because the filter is the first-order filter, then on selection of filter coefficient, it will refer to first-order Butterworth filter coefficient. The first order Butterworth filter coefficient is s+1 so a_k value is 1. With 100 Hz cut-off frequency then (13) will become to (13).

$$\begin{aligned} Q(s) &= \frac{1}{1 + a_k \tau s} \\ Q(s) &= \frac{1}{1 + \frac{1}{1/(2 * \pi * 100)^2} s^2} \\ Q(s) &= \frac{1}{1 + 0.0016s} \end{aligned} \quad (13)$$

Equation (13) is LPF first-order equation. The relation between the inverse model of room heating system and low pass filter are shown in Figure 6.

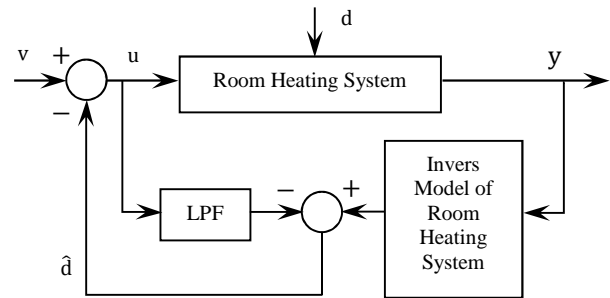


Fig. 6. Disturbance Observer

III. RESULT AND DISCUSSION

It has been pointed out earlier that the controller will be tested with four model variation of outside temperature air like shown in Figure 2.2 to 2.5. This four variation of temperature will be a disturbance to room heating system. The test performed by using Simulink in MATLAB 2014a. The test is performed on two different controllers, which is PID and PID-DOB controller. This two controller generated four different responses towards four variations of temperature disturbances.

After we get the result response, then we will calculate the both of controller performance index by using (8). By using this perform index value, we will find out which controller are the most resistant towards disturbance that coming from outside air temperature. After performing the simulation, we got a response that shows on Figure 7 to 10. There are three charts in each Figure. Those charts are reference chart and system response charts which uses PID and PID Disturbance Observer controller.

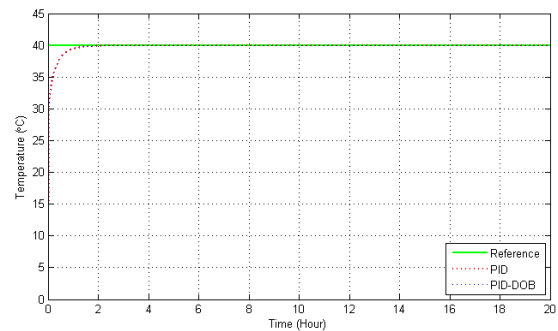


Fig. 7. Test I Result

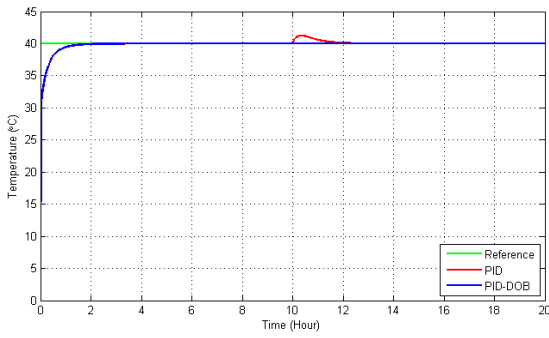


Fig. 8. Test II Result

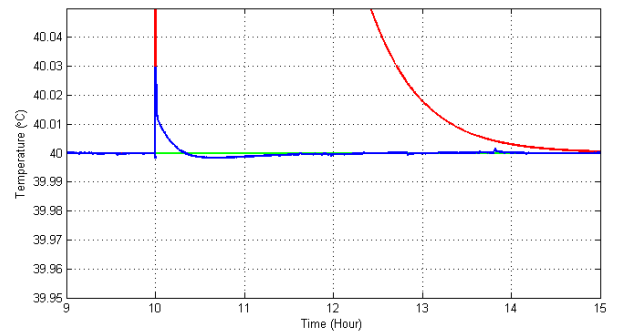


Fig. 12. Test III Result with PID-DOB

From Figure 11 and Figure 12, PID controller give overshoot value as big as 41.25°C while PID-DOB result is 40.03°C. This result showed that PID-DOB is resistant toward the increase of outside air temperature disturbance than PID controller. Then on test III, PID controller shows the bigger decreased temperature too than PID-DOB. The both of system response can be seen in Figure 13 and Figure 14.

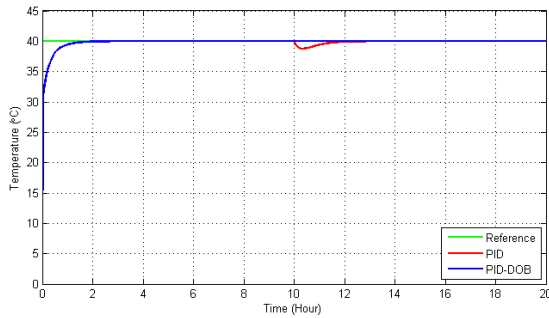


Fig. 9. Test III Result

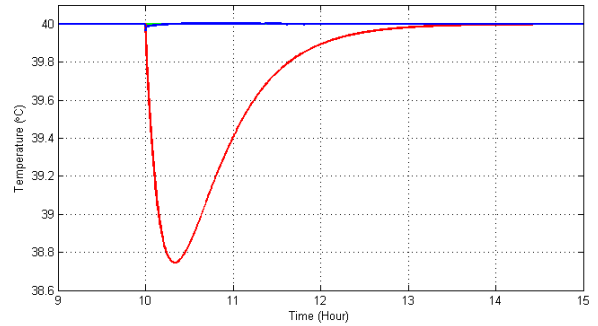


Fig. 13. Test III Result with PID

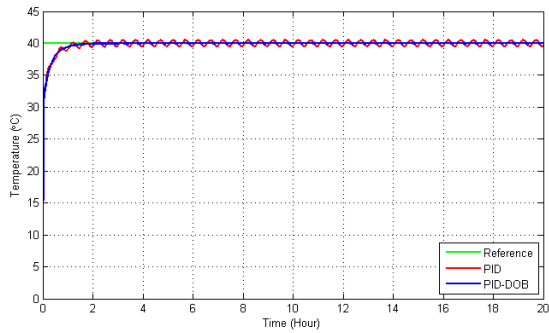


Fig. 10. Test IV Result

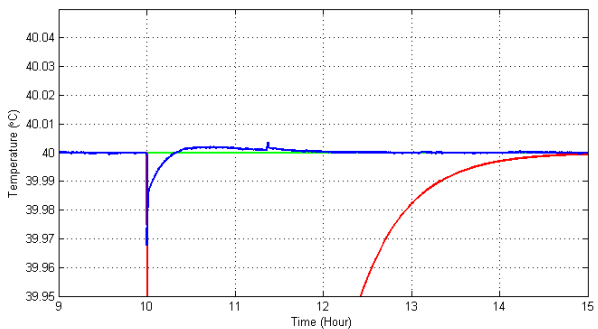


Fig. 14. Test III Result with PID-DOB

From Figure 13 and Figure 14, PID controller produced decreased temperature as 38.75°C while PID-DOB produced decreased temperature as 39.97°C. The result showed that PID-DOB is more resistant to decreased of air temperature outside disturbance than PID controller.

On Test I, Figure 7 shown that PID and PID-DOB controller system response result is nearly same. This result showed that both of controller have nearly same resistant toward disturbance that coming from outside air temperature. On test II, PID controller shows the bigger overshoot than PID-DOB. If Figure 8 were zoomed then we will see it look like Figure 11 and Figure 12.

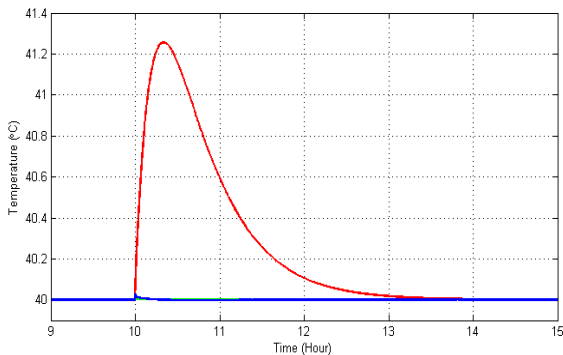


Fig. 11. Test II Result with PID

Then on IV test, PID showed bigger amplitude than PID-DOB. Both of this response system are shown in Figure 15 and Figure 16.

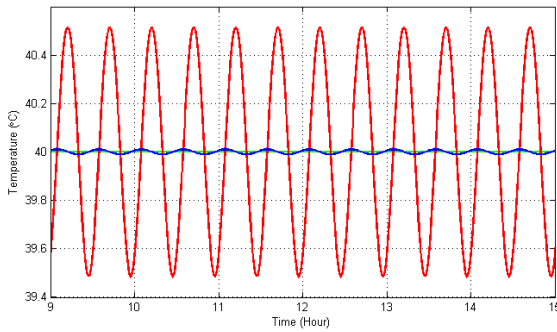


Fig. 15. Test IV Result with PID

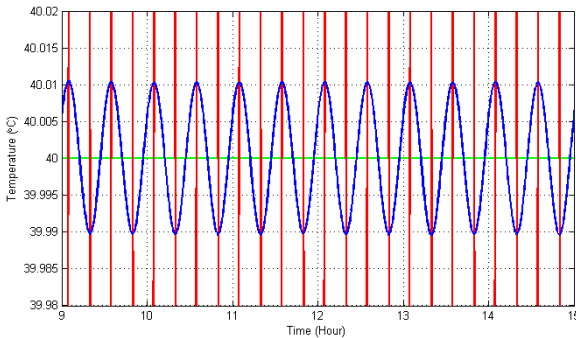


Fig. 16. Test IV Result with PID-DOB

From Figure 15 and Figure 16, PID controller produce amplitude temperature as 0.5°C while PID-DOB produces amplitude temperature as 0.01°C. The result showed that PID-DOB is more resistant to air temperature outside disturbance than PID controller.

After we perform a simulation to observe both of controller response system, this research also calculates both of controller performance index toward the four disturbances. Table 4.1 are shown ITAE Values.

TABLE I. ITAE PID &PID-DOB VALUE

Test	Controller	
	PID	PID-DOB
I	1.25	1.27
II	15.2	1.3
III	15.2	1.31
IV	10.4	3.23
Average	10.51	1.78

Table 4.1 shown that PID-DOB controller performance index is better than PID.

IV. CONCLUSION

On this research, two controllers are used as a temperature control on room heating system. These two controllers are PID and PID-DOB. This two controller are tested with four type disturbance in form of variated air temperature outside the room. The result showed that PID-DOB can be used on room heating system as a temperature control that resist to the varied temperature outside the room.

ACKNOWLEDGMENT

First thank to Allah SWT because with his permission we can complete this research paper project which the title is Design of PID Disturbance Observer for Temperature Control on Room Heating System.

The greatest appreciation goes to my parents, Mr. Ali Fikri and Mrs. Pancawati, and my beloved woman, Serlinda Wiyanti Ningsih, who never stop support the completion of this research.

Finally, the researcher present the appreciation also goes to everybody in University of Widya Kartika, who giving suggestion and facilities for realization of this research.

REFERENCES

- [1] Lienhard IV, G John H. and John H. Lienhard IV. 2000. "A Heat Transfer Textbook". Massachusetts: Lienhard
- [2] Nachidi, M., A. Benzaouia, and F. Tadeo. 2006. "Temperature and Humidity Control Greenhouses Using The Takagi-Sugeno Fuzzy Model". *International Conference on Control Applications*. Pages:2150-2154
- [3] Kaewwiset, Theeramet, and Paitoon Yodkhad. 2017. "Automatic Temperature and Humidity Control System by Using Fuzzy Logic Algorithm for Mushroom Nursery". Pages:1- 4.
- [4] Das, Tarun Kumar, and Yudhajit Das. 2013. "Design of A Room Temperature and Humidity Controller Using Fuzzy Logic", *American Journal of Engineering Research*. 2(11):86-97
- [5] Bhusan, Bharat, Ajit Kumar Sharma, and Deepti Singh. 2016. "Fuzzy & ANFIS Based Temperature Control of Water Bath System". *International Conference on Power Electronics*. Pages:1-6
- [6] Hidayat, Nur, Reza Fauzi Iskandar, and Mamat Rokhmat. 2015. "Personal Computer Temperature Control Using PID Control Based Liquid Cooling System", *International Conference on Automation*. Pages:169 - 171.
- [7] Abeykoon, A.M. Harsha S. and Hasala R. Senevirathne. 2012. "Disturbance Observer Based Current Controller for A DC motor". Pages:47- 52.
- [8] Mathworks. (2012). Model A Dynamic System. obtained 10 February 2017. from <https://www.mathworks.com/help/simulink/gs/define-system.html>
- [9] Ogata, Katsuhiko. 1996. "Teknik Kontrol Automatik". Jakarta:Penerbit Erlangga
- [10] Wang, Chun-Chih and Masayoshi Tomizuka. 2004. "Design of Robustly Stable Disturbance Observers Based on Closed Loop Consideration Using H_{∞} Optimization and its Applications to Motion Control Systems". *Proceedings of 2004 American Control Conference*. Pages:3764-3769



2017 4th INTERNATIONAL CONFERENCE ON
ELECTRICAL ENGINEERING COMPUTER SCIENCE AND INFORMATICS


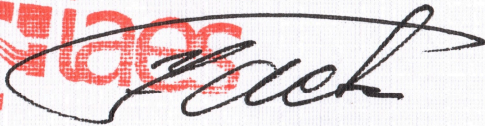
September 19-21, 2017
Yogyakarta, Indonesia

CERTIFICATE OF APPRECIATION

is awarded to

Yoga Utama

In recognition and appreciation of your contribution as
Presenter



Mochammad Facta, Ph.D.
IAES Indonesia, Chair



Tole Sutikno, Ph.D.
General Chair

Organizer:



co-Organizers:



Technical co-Sponsorship by:



Supported by:

